



Jorgensen Land & Cattle
PARTNERSHIP

AGE ADVANTAGE BULL SALE

CALIFORNIA
EDITION

NOVEMBER 3rd, 2025
1:00 PM PST

101 Livestock Market
Aromas, CA



Jorgensen Land & Cattle

— P A R T N E R S H I P —

Cattlemen & Cattlegirls,

On Behalf of the Jorgensen Family and the team at Jorgensen Land & Cattle, we invite you to join us on November 3rd at 101 Livestock Market in Aromas, CA for the inaugural “Jorgensen Land & Cattle Age Advantage Bull Sale: California Edition”.

These are exciting times we are living through in the cattle industry, and having good cattle is going to be very profitable in the coming years. This set of bulls we are bringing to California are all a direct result of The MotherLode Project. The MotherLode Breeding Philosophy centers around stacking proven cows in a pedigree and producing both excellent females and bulls that will sire excellent females. Every one of these bulls is an ET mating from some of the best cows and sires ever used in the MotherLode Program.

The data you will see in the book is from the Ideal Beef Evaluation (IBE), which is the genomic evaluation developed by Jorgensen Land & Cattle. The evaluation is in partnership with Zoetis and is backed by 60+ years of performance testing data at Jorgensen Land & Cattle.

Jorgensen Land & Cattle is excited to bring this program and set of bulls to the 101, and we appreciate your interest in our program. We look forward to meeting you all and visiting with you prior to or at the sale. Thank you for your interest and we will see you at the 101 on November 3rd.

The Jorgensen Family



Jorgensen Land & Cattle

PARTNERSHIP

Sale Day Telephones:

Andy Tegethoff - 605-207-0400

Larry Gran - 605-641-3254

101 Livestock - 831-726-3303

Jim Warren - 831-320-3698

Cole Warren - 831-998-0194

**JLC Office - 605-842-3217 or
800-548-BULL**

Sale Location:

101 Livestock Market

4400 Hwy 101

Aromas, CA 95004

Inspection of the Cattle:

Cattle will be housed at 101 Livestock Market by November 1st, 2025, and will be available for viewing at any time. Prior to that, please contact a member of the Jorgensen Team, who will be happy to provide you any information they can.

Health:

Cattle have been through a comprehensive herd health program.

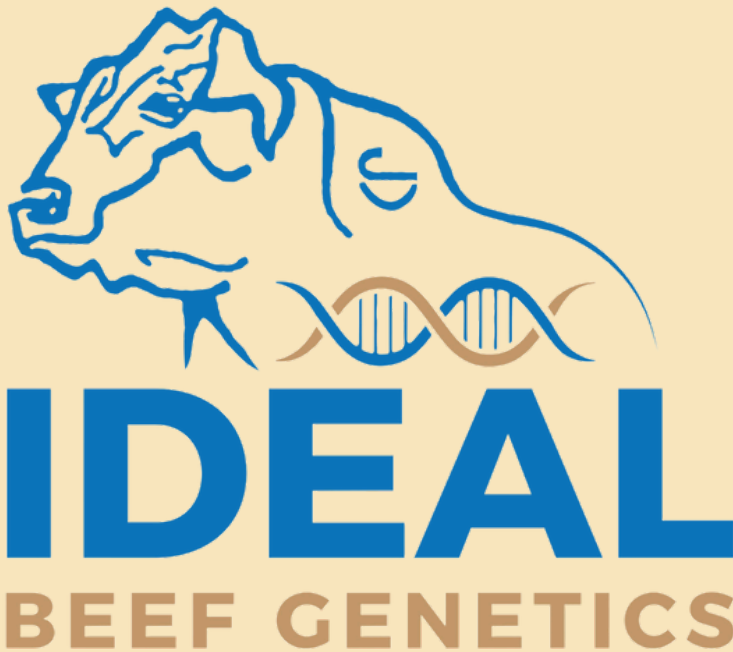
Terms & Conditions:

Cattle will sell under the suggested Terms & Conditions of the American Angus Association (https://www.angus.org/pub/suggested_sale_terms.pdf).



POWER YOUR HERD

with



GEPDs Include

- Birth Weight
- Weaning Weight
- Yearling Weight
- Docility
- Milk
- Fertility
- Scrotal Circumference
- Dry matter Intake
- Feed Conversion Rate
- Average Daily Gain
- Intramuscular Fat
- Ribeye Area
- Fat Thickness
- Tenderness

IBG

Uses 3 Custom Indices from the Ideal Beef Evaluation to make genetic decisions more simple:

JVIH

Index for selecting heifer bulls

JVIM

Index for selecting cows/bulls with optimal maternal and performance traits

JVIT

Index for selecting cattle with optimal feedlot/carcass traits for those herds that don't keep replacement heifers



Scan to learn more

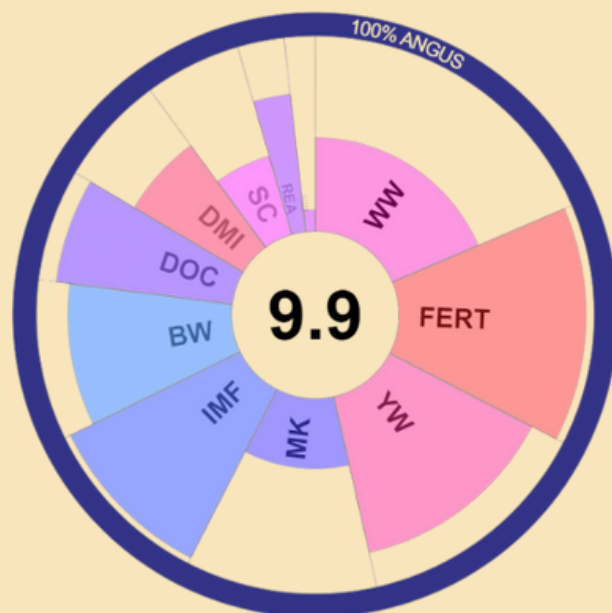
1-800-548-2855

www.jorgensenfarms.com

DATA HAS A STORY TO TELL, NOW IT HAS A VOICE

WE INCORPORATE AGBOOST VISUALIZATIONS INTO EACH LOT BECAUSE, A PICTURE CAN BE QUICKER TO INTERPRET THAN A SPREADSHEET OF NUMBERS. USING GEPDS AND PERCENTILE RANKINGS FROM THE IDEAL BEEF EVALUATION (IBE), THE AGBOOST SCORE DISPLAYS EACH LOT'S INDIVIDUAL TRAIT RANKING FOR ALL THE TRAITS WE CURRENTLY MEASURE IN THE IBE:

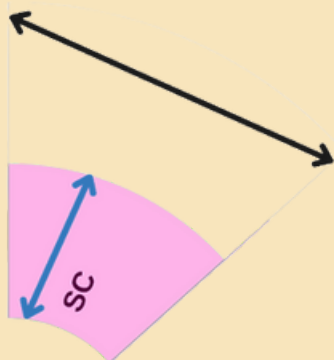
BW- BIRTH WEIGHT GEPD
WW- WEANING WEIGHT GEPD
YW- YEARLING WEIGHT GEPD
ADG- AVERAGE DAILY GAIN GEPD
DMI- DRY MATTER INTAKE
FCR- FEED CONVERSION RATE GEPD
DOC- DOCILITY GEPD
SC- SCROTAL CIRCUMFERENCE GEPD
MK- MILK GEPD
FERT- COW FERTILITY GEPD
IMF- INTRAMUSCULAR FAT GEPD
REA- RIBEYE AREA GEPD
RIB- RIB FAT GEPD
TEND- TENDERNESS GEPD



JVIM

Powered by  AgBoost®

HOW TO INTERPRET THE AGBOOST VISUALIZATION



TRAIT WIDTH (BLACK LINE)- THE WIDTH OF EACH TRAIT ON THE CHART IS AN INDICATOR OF THAT TRAIT'S HERITABILITY. THE WIDER THE PORTION, THE MORE HERITABLE A TRAIT IS. TRAITS ARE ORDERED IN CLOCKWISE FOR MATION FROM MOST TO LEAST HERITABLE

TRAIT HEIGHT (BLUE LINE)- THE HIGHER A TRAIT REACHES FROM THE CENTER, THE BETTER THAT TRAITS SCORE IS. CLOSE TO THE CENTER IS CLOS ER TO 0, CLOSE TO THE OUTSIDE EDGE IS CLOSE TO 10

ALL TRAITS ARE ON A 0-10 SCALE, 10 BEING THE BEST THE LARGE SCORE IN THE CENTER OF THE CHART IS THE AVERAGE OF ALL TEN TRAIT SCORES ON THE AGBOOST VISUALIZATION.

LEARN MORE ABOUT AGBOOST AT WWW.AG-BOOST.COM

OUR GOAL IN DISPLAYING OUR DATA IN THIS NEW FORMAT IS TO HELP YOU UNDERSTAND QUICKLY, EFFICIENTLY, AND PRODUCTIVELY WHAT BULLS FIT YOUR NEEDS



Jorgensen Land & Cattle
PARTNERSHIP

Jorgensen Land & Cattle: Family, Farming, and Program Cattle

In 1952, Martin Jorgensen Jr. and his brother Don started putting together a herd of Angus cows. Between then and the first auction sale and 1972, they worked diligently to build a cow herd that was backed by performance testing data that they were collecting. This heritage of using data to drive decisions and help guide the program was passed along into Greg and Bryan, and then to Cody and Nick.

With the 5th generation back at the ranch in Ideal, SD, the Jorgensen family continues to strive to use the best technology and data available to influence and drive the program forward.

The MotherLode Project is a call back to the original mindset of the program at Jorgensen Land & Cattle. It is a process of stacking the best performance cows they can into a pedigree and mating those cows to sires that are proven to make great females.

Family shines through in cattle and people, and this program is a prime example of both. The cattle are backed by excellent cows and better people, so you can bid and buy with confidence that these cattle will do what we say they are going to do and we will stand behind the cattle.

REFERENCE SIRE:



Jorgensen Land & Cattle
PARTNERSHIP

A - Band 116 of Ideal 2118 7174



- Born in 1977, "Band 174" became the sire that carried on the Eldorado Line from his father, "Band 116".
- He is known for his productivity, with Progeny ratios of 103 for weaning weight and 104 for yearling weight.
- His daughters were also very productive, earning a combined Progeny Weaning Ratio of 101.



B - Rito 707 of Ideal 3407 7075

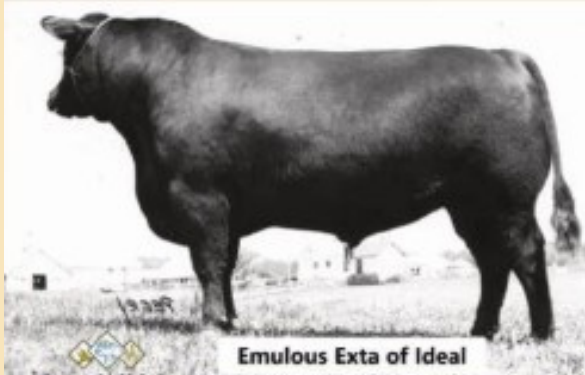
- The Jorgensen bred son of the incomparable R R Rito 707, "7075" proved himself to be the logical next step.
- The bull made his mark in herd sire production, including "Resource", "Renown", "Eliminator", "Registry", "Recharge" and many other household names in the breed.
- He earned Progeny ratios of 102 WW and 103 YW, and his daughters accumulated a Progeny WW Ratio of 100.



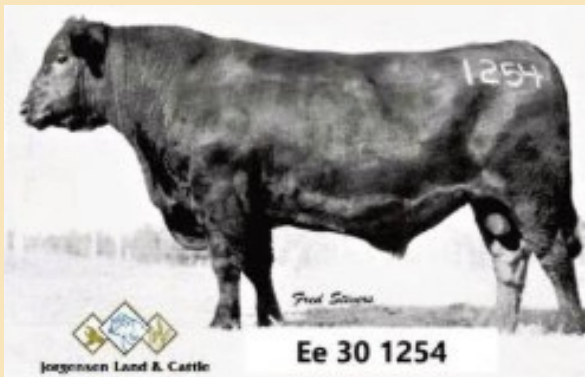
Jorgensen Land & Cattle
PARTNERSHIP

REFERENCE SIRE:

C - Emulous Extra of Ideal

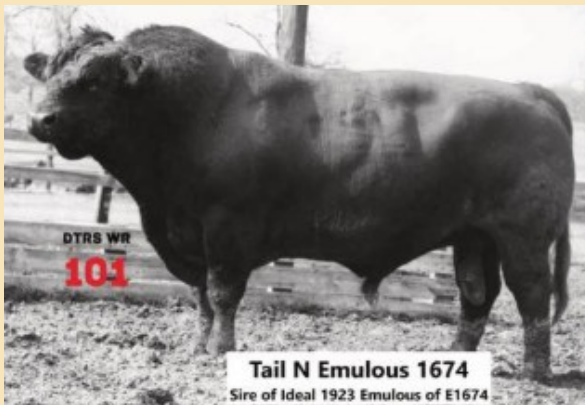


- The top selling bull in the 1975 "Jorgensen Brothers Breeding Value Angus Sale", Emulous Extra of Ideal sold 2/3rds interest for \$10,000 (\$59,882 in 2025 dollars).
- Extra was a big bull, weighing 2,425 pounds at 3 years of age.
- He transmitted his size to his offspring, earning progeny ratios of 103 WW and 104 YW, and his daughters earned a collective 101 WW ratio.
- His dam, "the 087 cow", produced 6 Jorgensen herd sires: Extra, Big Moose (ABS), Shorito, Extra 2227, and Bard of Ideal.



D - EE 30 1254 of Ideal 5254 960

- "1254" is the proven calving ease and maternal sire from the Emulous Line.
- His daughters have a Progeny WWR of 101 and he is immortalized as the sire of the legendary cow EE 4286 of Ideal 2240 1254, who is regarded as the crown jewel of the Lady family.



E - Tail N Emulous 1674

- The time-tested Pathfinder sire, who knowledgeable cattlemen believe to be the all-time greatest sire produced in the Corbin Tail N Program.
- The linebred proven sire features a pedigree backed with the best of the Emulous Certified Meat Sires
- He recorded a weaning ratio of 123 as the top performer in his calf crop out of a remarkable dam who earned a Progeny WWR of 120 on eight natural calves.



F - Rito Idealism 1R6

- "Idealism" has a beautifully linebred Rito pedigree, tracing a total of 38-times to R R Rito 707, a relationship in excess of 25%
- This may be the only son of Rito Idealist, the top selling bull in the 1998 Jorgensen Bull Sale and sire of "Idealism", as his career was cut short by injury before a semen bank could be collected.

BULLS DEVELOPED FOR SUCCESS, NOT FOR MAXIMUM YEARLING WEIGHT



Jorgensen Land & Cattle
PARTNERSHIP

IT IS NATURAL FOR SEEDSTOCK PRODUCERS TO WANT TO FEED BULLS TO ALLOW THEM TO EXPRESS THEIR GENETICS FOR GROWTH AND CARCASS TRAITS, BUT FEEDING STRATEGIES FOR GROWING BULLS CAN HAVE TRADEOFFS. YES, FEEDING HIGH-ENERGY DIETS WILL PRODUCE HIGHER 365-DAY YEARLING WEIGHTS AND HIGHER ULTRASOUND SCANS, BUT PUSHING THEM TOO HARD CREATES OVERLY FAT BULLS THAT ARE NOT AS FERTILE AND BULLS MORE PRONE TO SOUNDNESS PROBLEMS.

NUMEROUS CONTROLLED RESEARCH STUDIES IN AMERICA AND CANADA HAVE SHOWN THAT BULLS DEVELOPED ON HIGHER-ENERGY DIETS HAVE INCREASED SCROTAL CIRCUMFERENCE THAN BULLS ON LOWER-ENERGY DIETS; THAT MIGHT SEEM GOOD UNTIL WE REALIZE THAT SOME OF THAT CIRCUMFERENCE IS FAT. FAT AROUND THE TESTES REDUCES THE ABILITY OF TESTES TO COOL THEMSELVES, AND THEY NEED TO BE 4° TO 6° COOLER THAN CORE BODY TEMPERATURE TO PRODUCE NORMAL SPERM. THOSE BULLS DEVELOPED ON HIGHER-ENERGY DIETS HIGHER SCROTAL TEMPERATURES, HIGHER RATES OF SPERM DEFECTS, PRODUCE FEWER SPERM PER DAY, AND LOWER SPERM MOTILITY THAN BULLS ON THE LOWER-ENERGY DIETS.

FURTHERMORE, THOSE BULLS DEVELOPED ON HIGH-ENERGY ARE MORE LIKELY TO FAIL BSE EXAMS, HAVE LOWER MOTILITY AS MATURE BULLS, HAVE THAWED SEMEN THAT IS LESS VIABLE & DIE MORE OFTEN, AND PRODUCE EMBRYOS THAT HAVE WORSE DEVELOPMENT AFTER FERTILIZATION OCCURS. IN ADDITION, IT HAS LONG BEEN KNOWN THAT HIGH-ENERGY AND DIETS LACKING EFFECTIVE FIBER CAN LEAD TO ACIDOSIS AS WELL AS LAMINITIS.

SO, WHY DID WE DEVELOP THESE BULLS SO SLOWLY? (1) BECAUSE WE COULD; WE HAD THE TIME. (2) BECAUSE IT INCREASES THE ODDS OF THE BULLS PASSING THEIR BSE EXAM. (3) BECAUSE WE BELIEVE THAT DEVELOPING BULLS ON LOWER-ENERGY DIET INCREASES THE ODDS OF LONG-TERM ADVANTAGES WITH BREEDING BULLS: MORE SPERM, BETTER QUALITY SPERM, MORE "LONG-DISTANCE SPERM" (MOTILITY), BETTER EMBRYO DEVELOPMENT FOLLOWING FERTILIZATION, AND FEWER FEET PROBLEMS.

ANGUS BEEF BULLETIN EXTRA

January 4, 2022 | Vol. 15 | No. 1



Even though buyers know that a bull should be fit, not fat, they tend to think there is something wrong with a bull that's not carrying extra weight at sale time. Bulls are likely to be too fat unless the breeder feeds just a growing ration — and some of the "growing rations" people claim to be feeding still contain too much energy.

Don't Buy a Fat Bull

Sale-season nutrition should prepare bull for work instead of beauty.



Ideal 44103 Gemini

AAA +21144575 Birth Date 2/27/24



IDEAL 5570 OF 0452 0534
 IDEAL 9524 OF 5570 6809
 IDEAL 6809 OF 2P88 0459

SINCLAIR EXTRAVAGANT 6X7
 IDEAL 3020 OF SE 6X7 LADY
 IDEAL 4428 OF 6442 4465

IDEAL 0452 OF 5439 467
 IDEAL 0534 OF 7451 796
 SINCLAIR NET PRESENT VALUE
 IDEAL 0459 OF 5439 5467
 N BAR EMULATION EXT
 SINCLAIR LADY 2P30 8146
 IDEAL 6442 OF 8103 351
 IDEAL 4465 OF 6807 4286

ACT. BW	80
ADJ. WWT	611
ADJ. YWT	1250

- Full Brother to the great Ideal Encore, Gemini is brings an excellent combination of calving ease and growth
- The dam of Gemini, the \$50,000 Ideal 3020, selected by Voss Angus in the 2022 MotherLode Sale, is one of the most influential donors the program has seen

BW	WW	YW	MILK
-0.2 13%	45 61%	107 5%	24 76%
SC	IMF	REA	FAT
0.47 39%	0.44 2%	0.25 84%	0.02 86%

JVIM	JVIH	JVIT
9.82	9.91	9.91



Ideal 44059 Eldorado of B174
AAA +21144513 Birth Date 4/16/24

BAND 234 OF IDEAL 3191
 BAND 116 OF IDEAL 2118 7174
 RITO 149 OF IDEAL 808 72

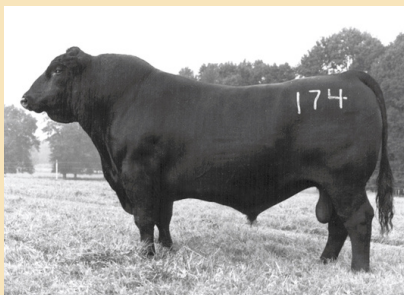
BAND 602 OF IDEAL 928 72
 RITO 72 OF IDEAL 606
 RITO 707 OF IDEAL 533 70
 BAR OF IDEAL 558 68

IDEAL ENCORE OF 9524 LADY
 IDEAL 9411 MARJORIE OF ENCOR
 IDEAL 7209 OF 1168 MARJORIE

IDEAL 9524 OF 5570 6809
 IDEAL 3020 OF SE 6X7 LADY
 IDEAL 1168 OF 9814 LADY
 IDEAL 5124 OF RES MARJORIE

BW	WW	YW	MILK
1.8 49%	53 11%	107 5%	20 95%
SC	IMF	REA	FAT
0.24 66%	0.16 76%	0.38 35%	0.01 40%
JVIM	JVIH	JVIT	
9.82	7.93	9.1	

ACT. BW	76
ADJ. WWT	648
ADJ. YWT	1274



IDEAL 4124 RES BLKBRD
DAM OF LOTS 3 & 36



IDEAL 4124 OF RES BLKBRD



Ideal 9411 Marjorie of Encor

IDEAL 9411 MARJORIE OF ENCOR
DAM OF LOTS 2, 5, 19, AND 24
FULL SISTER TO THE \$100,000 IDEAL ACCOLADE 2558



Ideal 44077 Eldorado of B174
AAA +21144492 Birth Date 4/21/24

BAND 234 OF IDEAL 3191
 BAND 116 OF IDEAL 2118 7174
 RITO 149 OF IDEAL 808 72

BAND 602 OF IDEAL 928 72
 RITO 72 OF IDEAL 606
 RITO 707 OF IDEAL 533 70
 BAR OF IDEAL 558 68

S A V RESOURCE 1441
 IDEAL 4124 OF RES BLKBRD
 IDEAL 6809 OF 2P88 0459

RITO 707 OF IDEAL 3407 7075
 S A V BLACKCAP MAY 4136
 SINCLAIR NET PRESENT VALUE
 IDEAL 0459 OF 5439 5467

BW	WW	YW	MILK
4.3 93%	49 34%	87 49%	19 96%
SC	IMF	REA	FAT
0.38 50%	0.09 92%	0.38 33%	0.00 27%
JVIM	JVIH	JVIT	
4.87	1.54	1.81	

ACT. BW	95
ADJ. WWT	677
ADJ. YWT	1336



Ideal 44047 Eldorado of B174
AAA +21144511 Birth Date 4/13/24

BAND 234 OF IDEAL 3191
 BAND 116 OF IDEAL 2118 7174
 RITO 149 OF IDEAL 808 72

BAND 602 OF IDEAL 928 72
 RITO 72 OF IDEAL 606
 RITO 707 OF IDEAL 533 70
 BAR OF IDEAL 558 68

IDEAL ENCORE OF 9524 LADY
 IDEAL 9411 MARJORIE OF ENCOR
 IDEAL 7209 OF 1168 MARJORIE

IDEAL 9524 OF 5570 6809
 IDEAL 3020 OF SE 6X7 LADY
 IDEAL 1168 OF 9814 LADY
 IDEAL 5124 OF RES MARJORIE

BW	WW	YW	MILK
0.7 26%	47 48%	90 41%	15 99%
SC	IMF	REA	FAT
0.26 65%	0.15 77%	0.33 56%	0.01 67%
JVIM	JVIH	JVIT	
8.92	7.39	5.14	

ACT. BW	77
ADJ. WWT	613
ADJ. YWT	1237



Ideal 44040 Eldorado of B174
AAA +21144502 Birth Date 4/12/24

BAND 234 OF IDEAL 3191
 BAND 116 OF IDEAL 2118 7174
 RITO 149 OF IDEAL 808 72

BAND 602 OF IDEAL 928 72
 RITO 72 OF IDEAL 606
 RITO 707 OF IDEAL 533 70
 BAR OF IDEAL 558 68

IDEAL ENCORE OF 9524 LADY
 IDEAL 7704 OF ENCORE BLKBRD
 IDEAL 5423 OF 3365 BLKBRD

IDEAL 9524 OF 5570 6809
 IDEAL 3020 OF SE 6X7 LADY
 IDEAL 3365 OF 1740 BELLE
 IDEAL 3569 OF 9524 BLKBRD

BW	WW	YW	MILK
1.3 39%	43 73%	89 43%	22 87%
SC	IMF	REA	FAT
0.29 61%	0.21 58%	0.26 81%	0.02 92%
JVIM	JVIH	JVIT	
2.98	3.16	4.6	

ACT. BW	77
ADJ. WWT	607
ADJ. YWT	1263



Ideal 44072 Eldorado of B174
AAA +21144494 Birth Date 4/19/24

BAND 234 OF IDEAL 3191
 BAND 116 OF IDEAL 2118 7174
 RITO 149 OF IDEAL 808 72

BAND 602 OF IDEAL 928 72
 RITO 72 OF IDEAL 606
 RITO 707 OF IDEAL 533 70
 BAR OF IDEAL 558 68

IDEAL 3751 OF 9774 ENCHANTER
 IDEAL 6077 OF 3751 JILT
 IDEAL 3510 OF 9524 JILT

IDEAL 9774 OF 332 2636
 IDEAL 8144 OF 4227 1514
 IDEAL 9524 OF 5570 6809
 IDEAL 1744 OF 6051 JILT

BW	WW	YW	MILK
1.3 38%	48 38%	90 41%	17 99%
SC	IMF	REA	FAT
0.73 14%	0.18 68%	0.23 89%	0.01 57%
JVIM	JVIH	JVIT	
6.22	5.77	2.26	

ACT. BW	77
ADJ. WWT	668
ADJ. YWT	1181



Ideal CCG 44240 Eld of Encr

AAA 21352453 Birth Date 4/10/24

IDEAL 9524 OF 5570 6809
IDEAL ENCORE OF 9524 LADY
IDEAL 3020 OF SE 6X7 LADY

IDEAL 5570 OF 0452 0534
IDEAL 6809 OF 2P88 0459
SINCLAIR EXTRAVAGANT 6X7
IDEAL 4428 OF 6442 4465

ANKONIAN DYNAMO 51A8
ACW EMBLYNETTE DA05 7241
S A V EMBLYNETTE 7241

ANKONIAN DYNAMO
ANKONY B127 LASS 01722
SINCLAIR EMULATION XXP
S A V EMBLYNETTE 4190

BW	WW	YW	MILK	ACT. BW	72
-1.5 3%	44 98%	90 97%	21 93%	ADJ. WWT	597
SC	IMF	REA	FAT	ADJ. YWT	1174
0.34 55%	0.29 26%	0.36 40%	0.03 99%		
JVIM	JVIH	JVIT			
4.96	9.01	7.3			



Ideal 42122 Emulous of TNE

AAA +21147868 Birth Date 4/16/24

TAIL N EMULOUS 848
TAIL N EMULOUS 1674
68 EMULOUS 154

EMULOUS PRIDE 127
BLUEBIRD ANNE JUMBO 33
EMULOUS PRIDE 135
ERICA OF EMULOUS

SITZ UNCOMMON
IDEAL 3812 OF UNCON BELLE
IDEAL 9505 OF 5570 7104

SITZ UPWARD 307R
SITZ ELLUNAS ELITE 1697
IDEAL 5570 OF 0452 0534
IDEAL 7104 OF 7291 2T7

BW	WW	YW	MILK	ACT. BW	69
1.2 37%	45 58%	71 91%	18 99%	ADJ. WWT	638
SC	IMF	REA	FAT	ADJ. YWT	1222
0.33 56%	0.29 27%	0.45 16%	0.01 58%		
JVIM	JVIH	JVIT			
9.37	8.56	5.5			



Ideal 44066 Eldorado of B174

AAA +21144475 Birth Date 4/17/24

BAND 234 OF IDEAL 3191
BAND 116 OF IDEAL 2118 7174
RITO 149 OF IDEAL 808 72

BAND 602 OF IDEAL 928 72
RITO 72 OF IDEAL 606
RITO 707 OF IDEAL 533 70
BAR OF IDEAL 558 68

IDEAL 5570 OF 0452 0534
IDEAL 9505 OF 5570 7104
IDEAL 7104 OF 7291 2T7

IDEAL 0452 OF 5439 467
IDEAL 0534 OF 7451 796
IDEAL 7291 OF 809 3281
RITA 2T7 OF 5H11 RITO 149

BW	WW	YW	MILK	ACT. BW	93
3.0 76%	46 55%	86 54%	19 67%	ADJ. WWT	587
SC	IMF	REA	FAT	ADJ. YWT	1168
0.23 68%	-0.15 99%	0.28 74%	0.00 18%		
JVIM	JVIH	JVIT			
3.7	1.81	1			



IDEAL 9505
DAM OF LOTS 8 AND 35



Ideal 42118 Emulous of TNE

AAA +21147780 Birth Date 3/31/24

TAIL N EMULOUS 848
TAIL N EMULOUS 1674
68 EMULOUS 154

EMULOUS PRIDE 127
BLUEBIRD ANNE JUMBO 33
EMULOUS PRIDE 135
ERICA OF EMULOUS

IDEAL 3751 OF 9774 ENCHANTER
IDEAL 6077 OF 3751 JILT
IDEAL 3510 OF 9524 JILT

IDEAL 9774 OF 332 2636
IDEAL 8144 OF 4227 1514
IDEAL 9524 OF 5570 6809
IDEAL 1744 OF 6051 JILT

BW	WW	YW	MILK	ACT. BW	72
-0.1 15%	40 90%	61 98%	16 99%	ADJ. WWT	468
SC	IMF	REA	FAT	ADJ. YWT	1146
0.53 32%	0.32 17%	0.37 39%	0.01 68%		
JVIM	JVIH	JVIT			
7.57	8.83	3.25			



Ideal 6077
Dam of lots 6, 9, 25, & 28
Also the dam of Ideal All Pro, who is making his mark on the Jorgensen Program today



Ideal 42093 Emulous of TNE

11

AAA +21147731 Birth Date 4/21/24

TAIL N EMULOUS 848
TAIL N EMULOUS 1674
68 EMULOUS 154

EMULOUS PRIDE 127
BLUEBIRD ANNE JUMBO 33
EMULOUS PRIDE 135
ERICA OF EMULOUS

IDEAL ENCORE OF 9524 LADY
IDEAL 7704 OF ENCORE BLKBRD
IDEAL 5423 OF 3365 BLKBRD
IDEAL 9524 OF 5570 6809
IDEAL 3020 OF SE 6X7 LADY
IDEAL 3365 OF 1740 BELLE
IDEAL 3569 OF 9524 BLKBRD

BW	WW	YW	MILK
-0.6 9%	37 96%	71 91%	16 99%
SC	IMF	REA	FAT
0.16 74%	0.34 13%	0.39 30%	0.03 97%

ACT. BW	70
ADJ. WWT	486
ADJ. YWT	1140

JVIM	JVIH	JVIT
7.12	8.11	6.85



Ideal 42108 Emulous of TNE

14

AAA +21147722 Birth Date 3/28/24

TAIL N EMULOUS 848
TAIL N EMULOUS 1674
68 EMULOUS 154

EMULOUS PRIDE 127
BLUEBIRD ANNE JUMBO 33
EMULOUS PRIDE 135
ERICA OF EMULOUS

IDEAL 9524 OF 5570 6809
IDEAL 7732 OF 9524 BETTY
IDEAL 6505 OF 3542 34
IDEAL 5570 OF 0452 0534
IDEAL 6809 OF 2P88 0459
IDEAL 3542 OF 7451 7417
IDEAL 34 OF 049 1517

BW	WW	YW	MILK
-0.7 8%	39 91%	63 97%	26 54%
SC	IMF	REA	FAT
0.04 85%	0.34 13%	0.23 89%	0.02 85%

ACT. BW	78
ADJ. WWT	527
ADJ. YWT	1177

JVIM	JVIH	JVIT
5.95	7.48	3.34



Ideal 42114 Emulous of TNE

12

AAA +21147724 Birth Date 3/30/24

TAIL N EMULOUS 848
TAIL N EMULOUS 1674
68 EMULOUS 154

EMULOUS PRIDE 127
BLUEBIRD ANNE JUMBO 33
EMULOUS PRIDE 135
ERICA OF EMULOUS

IDEAL 9524 OF 5570 6809
IDEAL 7732 OF 9524 BETTY
IDEAL 6505 OF 3542 34
IDEAL 5570 OF 0452 0534
IDEAL 6809 OF 2P88 0459
IDEAL 3542 OF 7451 7417
IDEAL 34 OF 049 1517

BW	WW	YW	MILK
0.6 25%	36 97%	61 98%	21 90%
SC	IMF	REA	FAT
0.32 57%	0.32 18%	0.33 53%	0.03 95%

ACT. BW	90
ADJ. WWT	484
ADJ. YWT	1176

JVIM	JVIH	JVIT
7.84	8.29	4.42



Ideal 42217 Emulous of EE30

15

AAA +21144471 Birth Date 3/23/24

BIFFLES EMULOUS 051
EMULOUS EXTRA OF IDEAL
RITO 707 OF IDEAL 712 70

EMULOUS 178
BIFFLES IRENEMERE 616
R R RITO 707
ALGOMA 46 OF IDEAL 544

S A V RENOWN 3439
IDEAL 7101 OF REN MARJORIE
IDEAL 3805 OF UNCON MARJORIE
RITO 707 OF IDEAL 3407 7075
S A V BLACKCAP MAY 4136
SITZ UNCOMMON
IDEAL 9402 OF 3E8 236

BW	WW	YW	MILK
2.5 65%	44 67%	73 87%	25 64%
SC	IMF	REA	FAT
0.33 56%	0.26 38%	0.44 17%	0.00 23%

ACT. BW	84
ADJ. WWT	478
ADJ. YWT	1116

JVIM	JVIH	JVIT
6.94	4.6	5.86



Ideal 42223 Emulous of EE30

13

AAA +21144472 Birth Date 3/27/24

BIFFLES EMULOUS 051
EMULOUS EXTRA OF IDEAL
RITO 707 OF IDEAL 712 70

EMULOUS 178
BIFFLES IRENEMERE 616
R R RITO 707
ALGOMA 46 OF IDEAL 544

IDEAL ENCORE OF 9524 LADY
IDEAL 7704 OF ENCORE BLKBRD
IDEAL 5423 OF 3365 BLKBRD
IDEAL 9524 OF 5570 6809
IDEAL 3020 OF SE 6X7 LADY
IDEAL 3365 OF 1740 BELLE
IDEAL 3569 OF 9524 BLKBRD

BW	WW	YW	MILK
-1.7 3%	39 92%	79 74%	22 87%
SC	IMF	REA	FAT
0.03 86%	0.42 3%	0.33 54%	0.03 97%

ACT. BW	60
ADJ. WWT	534
ADJ. YWT	1168

JVIM	JVIH	JVIT
7.57	9.46	9.37



Ideal 42099 Emulous of TNE

16

AAA +21147740 Birth Date 3/25/24

TAIL N EMULOUS 848
TAIL N EMULOUS 1674
68 EMULOUS 154

EMULOUS PRIDE 127
BLUEBIRD ANNE JUMBO 33
EMULOUS PRIDE 135
ERICA OF EMULOUS

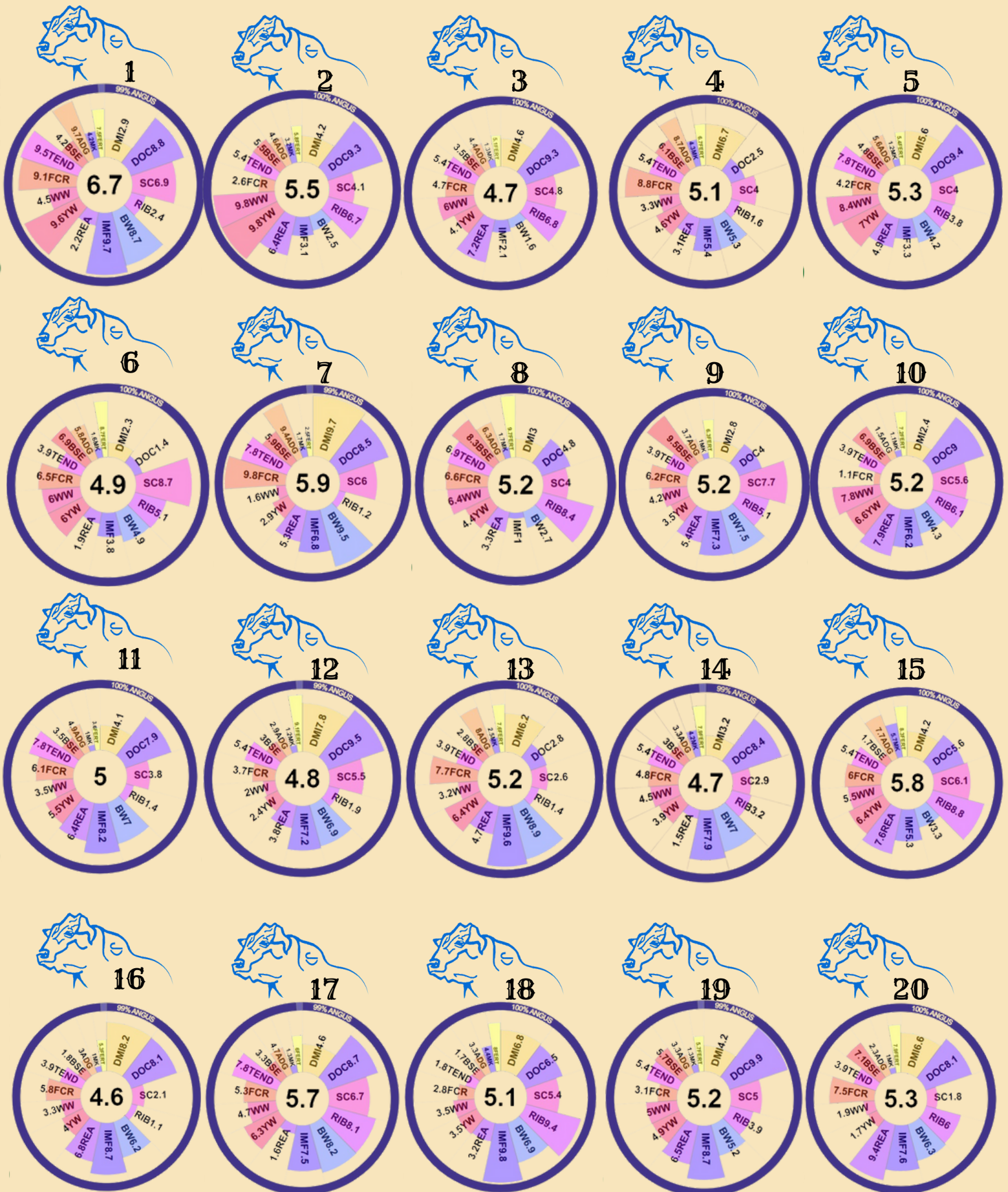
IDEAL ENCORE OF 9524 LADY
IDEAL 7704 OF ENCORE BLKBRD
IDEAL 5423 OF 3365 BLKBRD
IDEAL 9524 OF 5570 6809
IDEAL 3020 OF SE 6X7 LADY
IDEAL 3365 OF 1740 BELLE
IDEAL 3569 OF 9524 BLKBRD

BW	WW	YW	MILK
0.0 15%	38 94%	64 97%	15 99%
SC	IMF	REA	FAT
-0.07 91%	0.37 8%	0.40 28%	0.04 99%

ACT. BW	78
ADJ. WWT	508
ADJ. YWT	1151

JVIM	JVIH	JVIT
7.75	7.66	8.2

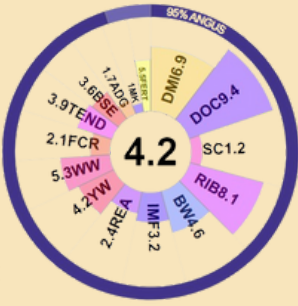
AG BOOST OVERALL SCORES



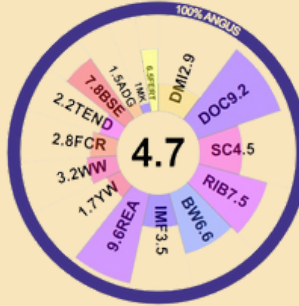
AG BOOST OVERALL SCORES



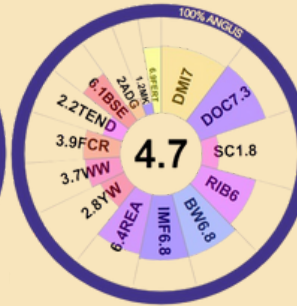
21



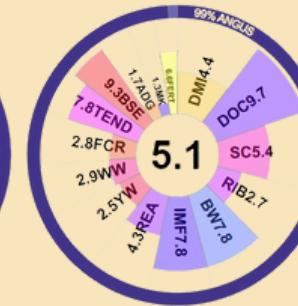
22



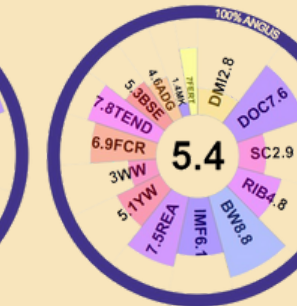
23



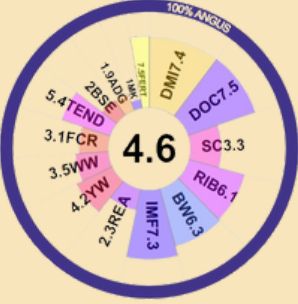
24



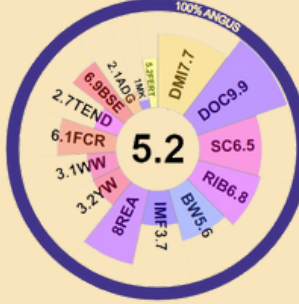
25



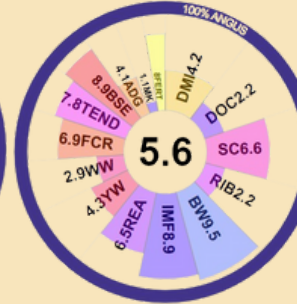
26



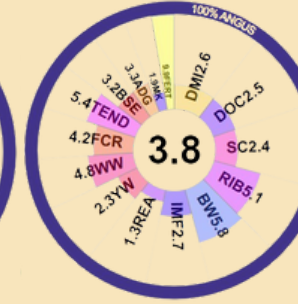
27



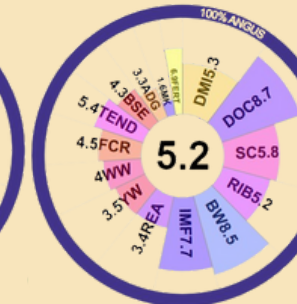
28



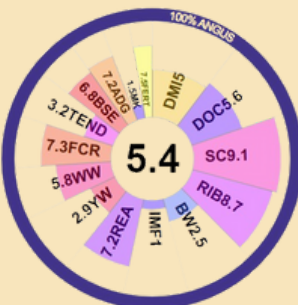
29



30



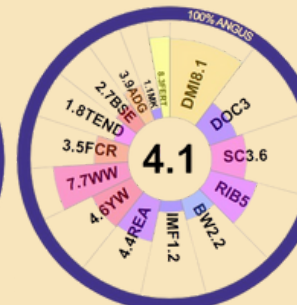
31



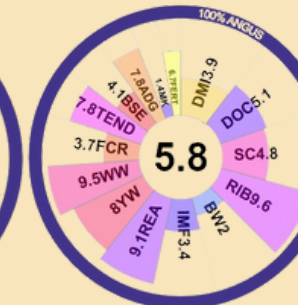
32



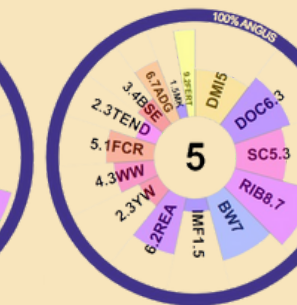
33



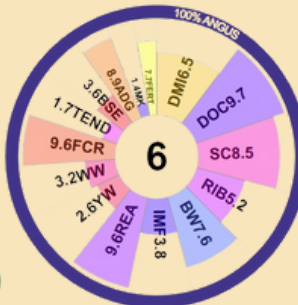
34



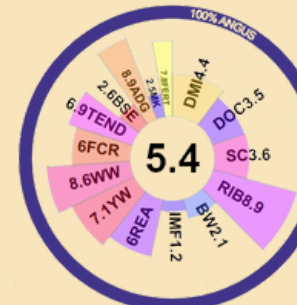
35



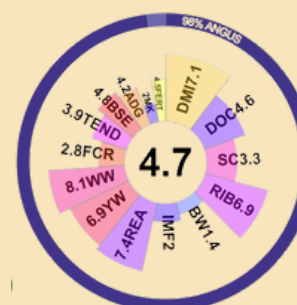
36



37



38





Ideal 42110 Emulous of TNE

AAA +21147910 Birth Date 3/29/24

TAIL N EMULOUS 848
TAIL N EMULOUS 1674
68 EMULOUS 154

EMULOUS PRIDE 127
BLUEBIRD ANNE JUMBO 33
EMULOUS PRIDE 135
ERICA OF EMULOUS

IDEAL 9814 OF 6832 7607
IDEAL 1175 OF 9814 CAMILLA
IDEAL 9764 OF 332 4647

IDEAL 6832 OF 2P88 3384
IDEAL 7607 OF 4545 4584
IDEAL 332 OF 049 8221
IDEAL 4647 OF 452 2271

BW	WW	YW	MILK
-1.8 2%	39 93%	65 96%	22 84%
SC	IMF	REA	FAT
0.40 47%	0.33 15%	0.25 85%	0.00 37%
JVIM	JVIH	JVIT	
8.92	9.64	6.31	

ACT. BW	66
ADJ. WWT	498
ADJ. YWT	1157



Ideal 42109 Emulous of TNE

AAA +21147800 Birth Date 3/28/24

TAIL N EMULOUS 848
TAIL N EMULOUS 1674
68 EMULOUS 154

EMULOUS PRIDE 127
BLUEBIRD ANNE JUMBO 33
EMULOUS PRIDE 135
ERICA OF EMULOUS

IDEAL 0420 OF 7544 BLACKBIRD
IDEAL 5706 OF 0420 BLKBRD
IDEAL 2333 OF 0611 BLKBRD

IDEAL 7544 OF 3542 0421
IDEAL 7200 OF 2215 0511
IDEAL 0611 OF 4608 JILT
IDEAL 9532 OF 5578 6302

BW	WW	YW	MILK
-0.9 6%	32 99%	54 99%	18 99%
SC	IMF	REA	FAT
-0.12 93%	0.33 14%	0.53 4%	0.01 59%
JVIM	JVIH	JVIT	
5.95	6.58	4.06	

ACT. BW	70
ADJ. WWT	490
ADJ. YWT	1139



Ideal 42256 Emulous of 1254

AAA +21144518 Birth Date 5/2/24

E E 30 960 OF IDEAL 119
EE 30 1254 OF IDEAL 5254 960
RITO 208 OF IDEAL 3176

EMULOUS EXTRA OF IDEAL
EMULOUS 70 OF IDEAL 914 71
RITO 72 OF IDEAL 928
RITO 149 OF IDEAL 921

S A V RESOURCE 1441
IDEAL 5123 OF RES MARJORIE
IDEAL 9147 OF 4355 236

RITO 707 OF IDEAL 3407 7075
S A V BLACKCAP MAY 4136
IDEAL 4355 OF 0T26 2440
IDEAL 236 OF 5189 8651

BW	WW	YW	MILK
1.9 25%	45 63%	84 62%	23 79%
SC	IMF	REA	FAT
0.40 48%	0.45 2%	0.27 78%	-0.01 6%
JVIM	JVIH	JVIT	
8.29	8.83	8.92	

ACT. BW	93
ADJ. WWT	704
ADJ. YWT	1314



Ideal 42107 Emulous of TNE

AAA +21147904 Birth Date 3/28/24

TAIL N EMULOUS 848
TAIL N EMULOUS 1674
68 EMULOUS 154

EMULOUS PRIDE 127
BLUEBIRD ANNE JUMBO 33
EMULOUS PRIDE 135
ERICA OF EMULOUS

IDEAL 7275 OF 5V3 1431
IDEAL 1011 OF 7275 BLACKCAP
IDEAL 8515 OF 3542 286

SINCLAIR EXTREME 5V3
IDEAL 1431 OF 1418 668
IDEAL 3542 OF 7451 7417
IDEAL 286 OF 049 0411

BW	WW	YW	MILK
1.7 49%	41 86%	65 96%	17 99%
SC	IMF	REA	FAT
-0.39 99%	0.22 54%	0.30 65%	0.01 40%
JVIM	JVIH	JVIT	
6.31	5.05	2.98	

ACT. BW	84
ADJ. WWT	495
ADJ. YWT	1080



Ideal 42123 Emulous of TNE

AAA +21147439 Birth Date 4/16/24

TAIL N EMULOUS 848
TAIL N EMULOUS 1674
68 EMULOUS 154

EMULOUS PRIDE 127
BLUEBIRD ANNE JUMBO 33
EMULOUS PRIDE 135
ERICA OF EMULOUS

IDEAL ENCORE OF 9524 LADY
IDEAL 9411 MARJORIE OF ENCOR
IDEAL 7209 OF 1168 MARJORIE

IDEAL 9524 OF 5570 6809
IDEAL 3020 OF SE 6X7 LADY
IDEAL 1168 OF 9814 LADY
IDEAL 5124 OF RES MARJORIE

BW	WW	YW	MILK
-0.1 15%	41 87%	68 94%	19 96%
SC	IMF	REA	FAT
0.28 62%	0.37 8%	0.40 28%	0.02 78%
JVIM	JVIH	JVIT	
8.74	8.2	7.03	

ACT. BW	78
ADJ. WWT	652
ADJ. YWT	1165



Ideal 42112 Emulous of TNE

AAA +21147803 Birth Date 3/29/24

TAIL N EMULOUS 848
TAIL N EMULOUS 1674
68 EMULOUS 154

EMULOUS PRIDE 127
BLUEBIRD ANNE JUMBO 33
EMULOUS PRIDE 135
ERICA OF EMULOUS

IDEAL 0420 OF 7544 BLACKBIRD
IDEAL 5706 OF 0420 BLKBRD
IDEAL 2333 OF 0611 BLKBRD

IDEAL 7544 OF 3542 0421
IDEAL 7200 OF 2215 0511
IDEAL 0611 OF 4608 JILT
IDEAL 9532 OF 5578 6302

BW	WW	YW	MILK
-0.3 12%	37 96%	56 99%	17 99%
SC	IMF	REA	FAT
0.23 67%	0.20 59%	0.57 2%	0.01 40%
JVIM	JVIH	JVIT	
5.68	6.85	1.36	

ACT. BW	76
ADJ. WWT	541
ADJ. YWT	1120



Ideal 42120 Emulous of TNE

23

AAA +21147808 Birth Date 4/1/24

TAIL N EMULOUS 848
TAIL N EMULOUS 1674
68 EMULOUS 154

EMULOUS PRIDE 127
BLUEBIRD ANNE JUMBO 33
EMULOUS PRIDE 135
ERICA OF EMULOUS

IDEAL 0420 OF 7544 BLACKBIRD
IDEAL 5706 OF 0420 BLKBRD
IDEAL 2333 OF 0611 BLKBRD

IDEAL 7544 OF 3542 0421
IDEAL 7200 OF 2215 0511
IDEAL 0611 OF 4608 JILT
IDEAL 9532 OF 5578 6302

BW	WW	YW	MILK
0.7 26%	39 92%	64 97%	20 94%
SC	IMF	REA	FAT
-0.13 94%	0.31 19%	0.39 29%	0.01 61%
JVIM	JVIH	JVIT	
6.31	7.12	4.6	

ACT. BW	82
ADJ. WWT	448
ADJ. YWT	1073



Ideal 42097 Emulous of TNE

26

AAA +21147706 Birth Date 3/24/24

TAIL N EMULOUS 848
TAIL N EMULOUS 1674
68 EMULOUS 154

EMULOUS PRIDE 127
BLUEBIRD ANNE JUMBO 33
EMULOUS PRIDE 135
ERICA OF EMULOUS

IDEAL 9524 OF 5570 6809
IDEAL 7732 OF 9524 BETTY
IDEAL 6505 OF 3542 34

IDEAL 5570 OF 0452 0534
IDEAL 6809 OF 2P88 0459
IDEAL 3542 OF 7451 7417
IDEAL 34 OF 049 1517

BW	WW	YW	MILK
0.6 25%	38 95%	63 97%	17 99%
SC	IMF	REA	FAT
0.06 83%	0.32 17%	0.28 75%	0.01 59%
JVIM	JVIH	JVIT	
8.29	8.29	6.13	

ACT. BW	86
ADJ. WWT	427
ADJ. YWT	1040



Ideal 42131 Emulous of TNE

24

AAA +21147443 Birth Date 5/1/24

TAIL N EMULOUS 848
TAIL N EMULOUS 1674
68 EMULOUS 154

EMULOUS PRIDE 127
BLUEBIRD ANNE JUMBO 33
EMULOUS PRIDE 135
ERICA OF EMULOUS

IDEAL ENCORE OF 9524 LADY
IDEAL 9411 MARJORIE OF ENCOR
IDEAL 7209 OF 1168 MARJORIE

IDEAL 9524 OF 5570 6809
IDEAL 3020 OF SE 6X7 LADY
IDEAL 1168 OF 9814 LADY
IDEAL 5124 OF RES MARJORIE

BW	WW	YW	MILK
-1.0 6%	35 98%	55 99%	18 98%
SC	IMF	REA	FAT
0.28 62%	0.35 11%	0.36 43%	0.02 90%
JVIM	JVIH	JVIT	
7.39	8.74	3.34	

ACT. BW	81
ADJ. WWT	561
ADJ. YWT	1168



Ideal 42125 Emulous of TNE

27

AAA +21147827 Birth Date 4/22/24

TAIL N EMULOUS 848
TAIL N EMULOUS 1674
68 EMULOUS 154

EMULOUS PRIDE 127
BLUEBIRD ANNE JUMBO 33
EMULOUS PRIDE 135
ERICA OF EMULOUS

S A V RESOURCE 1441
IDEAL 4121 OF RES BETTY
IDEAL 6505 OF 3542 34

RITO 707 OF IDEAL 3407 7075
S A V BLACKCAP MAY 4136
IDEAL 3542 OF 7451 7417
IDEAL 34 OF 049 1517

BW	WW	YW	MILK
1.1 35%	38 93%	58 99%	19 96%
SC	IMF	REA	FAT
0.40 48%	0.22 53%	0.46 13%	0.01 51%
JVIM	JVIH	JVIT	
7.84	7.3	3.7	

ACT. BW	76
ADJ. WWT	625
ADJ. YWT	1098



Ideal 42105 Emulous of TNE

25

AAA +21147777 Birth Date 3/28/24

TAIL N EMULOUS 848
TAIL N EMULOUS 1674
68 EMULOUS 154

EMULOUS PRIDE 127
BLUEBIRD ANNE JUMBO 33
EMULOUS PRIDE 135
ERICA OF EMULOUS

IDEAL 3751 OF 9774 ENCHANTER
IDEAL 6077 OF 3751 JILT
IDEAL 3510 OF 9524 JILT

IDEAL 9774 OF 332 2636
IDEAL 8144 OF 4227 1514
IDEAL 9524 OF 5570 6809
IDEAL 1744 OF 6051 JILT

BW	WW	YW	MILK
-2.2 1%	37 96%	63 97%	21 90%
SC	IMF	REA	FAT
0.04 85%	0.28 28%	0.43 19%	0.01 71%
JVIM	JVIH	JVIT	
6.85	9.28	4.24	

ACT. BW	74
ADJ. WWT	450
ADJ. YWT	1091



Ideal 42096 Emulous of TNE

28

AAA +21147774 Birth Date 3/24/24

TAIL N EMULOUS 848
TAIL N EMULOUS 1674
68 EMULOUS 154

EMULOUS PRIDE 127
BLUEBIRD ANNE JUMBO 33
EMULOUS PRIDE 135
ERICA OF EMULOUS

IDEAL 3751 OF 9774 ENCHANTER
IDEAL 6077 OF 3751 JILT
IDEAL 3510 OF 9524 JILT

IDEAL 9774 OF 332 2636
IDEAL 8144 OF 4227 1514
IDEAL 9524 OF 5570 6809
IDEAL 1744 OF 6051 JILT

BW	WW	YW	MILK
-1.8 2%	37 96%	61 98%	17 99%
SC	IMF	REA	FAT
0.38 51%	0.40 5%	0.41 24%	0.02 94%
JVIM	JVIH	JVIT	
8.38	9.91	6.76	

ACT. BW	84
ADJ. WWT	478
ADJ. YWT	1062



Ideal 42209 Emulous of EE30

AAA +21144804 Birth Date 3/29/24

BIFFLES EMULOUS 051
EMULOUS EXTRA OF IDEAL
RITO 707 OF IDEAL 712 70

EMULOUS 178
BIFFLES IRENEMERE 616
R R RITO 707
ALGOMA 46 OF IDEAL 544

IDEAL 2760 OF 6051 BLKBRD
IDEAL 6300 OF 2760 BELLE
IDEAL 9505 OF 5570 7104

IDEAL 6051 OF 332 2636
IDEAL 5708 OF 2633 3662
IDEAL 5570 OF 0452 0534
IDEAL 7104 OF 7291 2T7

BW	WW	YW	MILK
0.8 28%	41 86%	62 98%	20 96%
SC	IMF	REA	FAT
-0.05 90%	0.17 72%	0.20 94%	0.01 65%
JVIM	JVIH	JVIT	
4.42	5.05	1.09	

ACT. BW	80
ADJ. WWT	439
ADJ. YWT	1028



Ideal 40580 Rito of Idealism

AAA +21144563 Birth Date 3/31/24

RITO IDEALIST
RITO IDEALISM 1R6
RITA 6D48 OF RITO 2T6 7174

R R RITO 707
IDEAL 3407 OF 1418 076
BAND 116 OF IDEAL 2118 7174
RITA 2T6 OF 5H11 RITO 149

S A V RENOWN 3439
IDEAL 8048 OF REN MARJORIE
IDEAL 9763 OF 332 6563

RITO 707 OF IDEAL 3407 7075
S A V BLACKCAP MAY 4136
IDEAL 332 OF 049 8221
IDEAL 6563 OF 4545 3611

BW	WW	YW	MILK
-0.9 6%	40 89%	65 97%	20 94%
SC	IMF	REA	FAT
0.60 25%	0.22 54%	0.36 41%	0.00 16%
JVIM	JVIH	JVIT	
5.86	7.93	2.44	

ACT. BW	66
ADJ. WWT	534
ADJ. YWT	1153



Ideal 42094 Emulous of TNE

AAA +21147703 Birth Date 3/24/24

TAIL N EMULOUS 848
TAIL N EMULOUS 1674
68 EMULOUS 154

EMULOUS PRIDE 127
BLUEBIRD ANNE JUMBO 33
EMULOUS PRIDE 135
ERICA OF EMULOUS

IDEAL 9524 OF 5570 6809
IDEAL 7732 OF 9524 BETTY
IDEAL 6505 OF 3542 34

IDEAL 5570 OF 0452 0534
IDEAL 6809 OF 2P88 0459
IDEAL 3542 OF 7451 7417
IDEAL 34 OF 049 1517

BW	WW	YW	MILK
-1.3 4%	36 97%	56 99%	23 80%
SC	IMF	REA	FAT
0.30 59%	0.34 13%	0.33 54%	0.01 70%
JVIM	JVIH	JVIT	
8.11	9.46	4.69	

ACT. BW	78
ADJ. WWT	458
ADJ. YWT	1064



Ideal 40574 Rito of Idealism

AAA +21144562 Birth Date 3/27/24

RITO IDEALIST
RITO IDEALISM 1R6
RITA 6D48 OF RITO 2T6 7174

R R RITO 707
IDEAL 3407 OF 1418 076
BAND 116 OF IDEAL 2118 7174
RITA 2T6 OF 5H11 RITO 149

S A V RENOWN 3439
IDEAL 8093 OF REN BLCKWD
IDEAL 2811 OF UNCON BLCKWD

RITO 707 OF IDEAL 3407 7075
S A V BLACKCAP MAY 4136
SITZ UNCOMMON
IDEAL 4151 OF 1576 1390

BW	WW	YW	MILK
4.1 91%	49 34%	76 82%	17 99%
SC	IMF	REA	FAT
0.16 75%	0.03 97%	0.33 54%	0.01 60%
JVIM	JVIH	JVIT	
5.77	2.08	1.81	

ACT. BW	108
ADJ. WWT	522
ADJ. YWT	1097



Ideal 40579 Rito of Idealism

AAA +21144570 Birth Date 3/30/24

RITO IDEALIST
RITO IDEALISM 1R6
RITA 6D48 OF RITO 2T6 7174

R R RITO 707
IDEAL 3407 OF 1418 076
BAND 116 OF IDEAL 2118 7174
RITA 2T6 OF 5H11 RITO 149

S A V RENOWN 3439
IDEAL 8120 OF REN BELLE
IDEAL 9505 OF 5570 7104

RITO 707 OF IDEAL 3407 7075
S A V BLACKCAP MAY 4136
IDEAL 5570 OF 0452 0534
IDEAL 7104 OF 7291 2T7

BW	WW	YW	MILK
2.2 60%	44 71%	71 91%	20 94%
SC	IMF	REA	FAT
0.78 11%	-0.06 99%	0.40 29%	0.00 14%
JVIM	JVIH	JVIT	
3.88	1.81	1	

ACT. BW	76
ADJ. WWT	523
ADJ. YWT	1111



Ideal 40573 Rito of Idealism

AAA +21144564 Birth Date 3/26/24

RITO IDEALIST
RITO IDEALISM 1R6
RITA 6D48 OF RITO 2T6 7174

R R RITO 707
IDEAL 3407 OF 1418 076
BAND 116 OF IDEAL 2118 7174
RITA 2T6 OF 5H11 RITO 149

S A V RENOWN 3439
IDEAL 8122 OF REN MARJORIE
IDEAL 9763 OF 332 6563

RITO 707 OF IDEAL 3407 7075
S A V BLACKCAP MAY 4136
IDEAL 332 OF 049 8221
IDEAL 6563 OF 4545 3611

BW	WW	YW	MILK
3.3 81%	51 21%	85 55%	21 93%
SC	IMF	REA	FAT
0.29 61%	0.17 73%	0.49 8%	-0.01 4%
JVIM	JVIH	JVIT	
9.1	5.32	6.67	

ACT. BW	86
ADJ. WWT	531
ADJ. YWT	1065



Ideal 40009 Rito of 7075
AAA +21144544 Birth Date 3/6/24

R R RITO 707
 RITO 707 OF IDEAL 3407 7075
 IDEAL 3407 OF 1418 076

RITO N BAR
 ERISKAY OF ROLLIN ROCK 3
 IDEAL 1418 OF 8103 4286
 IDEAL 076 OF 692 8375
 IDEAL 0452 OF 5439 467
 IDEAL 0534 OF 7451 796
 IDEAL 7291 OF 809 3281
 RITA 2T7 OF 5H11 RITO 149

IDEAL 5570 OF 0452 0534
 IDEAL 9505 OF 5570 7104
 IDEAL 7104 OF 7291 2T7

BW	WW	YW	MILK	ACT. BW	80
1.1 35%	43 76%	74 85%	21 92%	ADJ. WWT	402
SC	IMF	REA	FAT	ADJ. YWT	995
0.35 54%	0.05 96%	0.35 44%	0.00 15%		
	JVIM	JVIH	JVIT		
	5.77	7.03	1.09		



Ideal 40006 Rito of 7075
AAA +21144547 Birth Date 3/1/24

R R RITO 707
 RITO 707 OF IDEAL 3407 7075
 IDEAL 3407 OF 1418 076

RITO N BAR
 ERISKAY OF ROLLIN ROCK 3
 IDEAL 1418 OF 8103 4286
 IDEAL 076 OF 692 8375

S A V RESOURCE 1441
 IDEAL 4124 OF RES BLKBRD
 IDEAL 6809 OF 2P88 0459

RITO 707 OF IDEAL 3407 7075
 S A V BLACKCAP MAY 4136
 SINCLAIR NET PRESENT VALUE
 IDEAL 0459 OF 5439 5467

BW	WW	YW	MILK	ACT. BW	80
0.9 29%	41 86%	70 91%	22 86%	ADJ. WWT	483
SC	IMF	REA	FAT	ADJ. YWT	1032
0.70 16%	0.17 73%	0.52 16%	0.01 51%		
	JVIM	JVIH	JVIT		
	8.29	9.01	3.25		



Ideal 40575 Rito of Idealism
AAA +21144561 Birth Date 3/28/24

RITO IDEALIST
 RITO IDEALISM 1R6
 RITA 6D48 OF RITO 2T6 7174

R R RITO 707
 IDEAL 3407 OF 1418 076
 BAND 116 OF IDEAL 2118 7174
 RITA 2T6 OF 5H11 RITO 149

S A V RENOWN 3439
 IDEAL 8101 OF REN MARJORIE
 IDEAL 5750 OF 9524 MARJORIE

RITO 707 OF IDEAL 3407 7075
 S A V BLACKCAP MAY 4136
 IDEAL 9524 OF 5570 6809
 IDEAL 9743 OF 332 236

BW	WW	YW	MILK	ACT. BW	82
2.4 63%	48 37%	80 72%	21 90%	ADJ. WWT	514
SC	IMF	REA	FAT	ADJ. YWT	1094
0.14 77%	0.02 98%	0.37 36%	0.00 15%		
	JVIM	JVIH	JVIT		
	5.5	1.99	1.81		



Ideal 40583 Rito of Idealism
AAA +21144567 Birth Date 3/31/24

RITO IDEALIST
 RITO IDEALISM 1R6
 RITA 6D48 OF RITO 2T6 7174

R R RITO 707
 IDEAL 3407 OF 1418 076
 BAND 116 OF IDEAL 2118 7174
 RITA 2T6 OF 5H11 RITO 149

S A V RENOWN 3439
 IDEAL 8122 OF REN MARJORIE
 IDEAL 9763 OF 332 6563

RITO 707 OF IDEAL 3407 7075
 S A V BLACKCAP MAY 4136
 IDEAL 332 OF 049 8221
 IDEAL 6563 OF 4545 3611

BW	WW	YW	MILK	ACT. BW	76
3.0 76%	44 70%	72 89%	23 79%	ADJ. WWT	487
SC	IMF	REA	FAT	ADJ. YWT	1040
0.08 82%	0.14 82%	0.43 82%	0.01 46%		
	JVIM	JVIH	JVIT		
	4.96	1.27	4.96		



Jorgensen Land & Cattle

PARTNERSHIP

31250 265TH ST. IDEAL, SD 57541

AGE ADVANTAGE BULL SALE

CALIFORNIA EDITION

**101 Livestock Market
Aromas, CA**

